




A Touchstone Energy® Cooperative 
 1100 SW Auburn Rd, Topeka, KS 66615
 785-478-3444
 www.kve.coop

**KAW VALLEY
ELECTRIC COOPERATIVE**

LightTalk

**Kaw Valley Electric
Cooperative, Inc.**

Jerry Manning—General Manager

Board of Trustees

Dallas Caster *Auburn*
President

Rob Sage *Dover*
Vice-President

Robert Lynch *Berryton*
Secretary

Larry Butel *Overbrook*
Treasurer

Gene “Pete” Allen *Valencia*
Trustee

Bill Conley *Delia*
Trustee

Don Montgomery *Burlingame*
Trustee

Mark Wulfkuhle *Clinton*
Trustee

Lloyd Wulfkuhle *Stull*
Trustee

Gregory Lee
Legal Counsel

**Energy Efficiency
Tip of the Month**



Circulate savings! Ceiling fans will keep you cool during summer months and can even allow you to raise your thermostat setting about four degrees without affecting your comfort.

Kaw Valley Hires Staking Engineer

Kaw Valley Electric Cooperative has hired **LOREN GOSS** as a staking engineer.

Goss has spent the past 16 years as a staking engineer with Wheatland Electric Cooperative in Garden City.

“We are excited to have Loren join the team at Kaw Valley Electric,” said Eric Wylie, Engineering Manager. “Loren brings a wealth of experi-



Loren Goss

ence with him, and will be a valuable asset as Kaw Valley Electric continues to grow and plan for the future.”

“Loren strongly desired to remain employed at an electric cooperative because he believes in the Cooperative Mission,” Wylie added.

Goss is a native of Garden City and holds a B.S. in Animal Science from Fort Hays State University. He and his wife, Ashley, have four children, Lucas, Hunter, Kourtney, and Abby.

Farlee Hired as PR/Marketing Specialist

LJEC has hired **SARAH FARLEE** as the public relations and marketing specialist. She will also have communications duties at Kaw Valley through our cooperative alliance.

Farlee has spent the past five years with *High Plains Journal* in Dodge City as the agriculture publication’s marketing director, and has multiple years of experience in public relations and



Sarah Farlee

marketing roles.

“Sarah comes from a strong agriculture background, which will be a terrific fit for both LJEC and Kaw Valley Electric,” said Chris Parr, LJEC Assistant Manager. “She brings a diverse background in public relations, marketing and communications.”

A native of Republic County, Farlee is a recent Kansas Agriculture and Rural Leadership (KARL) graduate, as well as former president of the Great Plains Chapter of the National Agrimarketing Association.

Beat the Summer Heat with Cool Products

When temperatures soar in the summer, utility bills can do the same. There are several small ways to manage your energy use this summer. Kaw Valley Electric is happy to help you with those simple, no- or low-cost ways to save—but for those who are considering remodeling or making larger purchases, here are a few ideas that may help keep your energy use in check and keep your wallet cool.

Remodeling?

If you are making esthetic changes to your home, consider products that will also make it work more efficiently. Heating and cooling systems use the most energy in our homes, so if you are making upgrades to your floors and cabinets, consider making some energy efficient upgrades, too.

If you're making additions to your home or converting attics or basements into living spaces, a ductless heating and cooling system is a great option. A ductless system does not require adding pipes or ductwork to a home's existing system, making it a more affordable upgrade for many. Ductless systems tend to be more efficient, meaning homeowners will use less energy and save on their electric bills. Contact your

local HVAC expert for more information.

If making changes to your heating and cooling system isn't the right upgrade for you now, consider installing a smart thermostat. These “cool” devices learn your behavior and adjust heating and air conditioning settings with a goal to save energy. Smart thermostats also have the capability to connect to the Internet, allowing homeowners to manage energy use via a smart phone app. There are several smart thermostat options available on the market, typically costs between \$200 and \$400.



This smart thermostat is easy to program. The display is very large and easy to read.

Purchasing new appliances?

If you are considering purchasing new appliances that will use less energy, but may not have the budget for a complete appliance overhaul, start with replacing your clothes dryer. Dryers are big consumers of electricity, using around 900 kWh each year as compared to a refrigerator, which uses around 455 kWh each year.

There have been big developments with dryers in recent years, and Energy Star awarded two standouts—the LG EcoHybrid Heat Pump Dryer and the Whirlpool HybridCare™ Heat Pump Dryer—the 2014 Emerging Technology Award.

Using heat pump technology, these dryers offer 40 percent in energy savings if operated on their most efficient settings and can save more than \$400 over the life of the dryer. If you are interested in purchasing other appliances or products, remember to visit energystar.gov and check out their “Most Efficient 2015” list to help you determine which products—from windows and HVAC systems to televisions and washers—are the most efficient for your home.



WHIRLPOOL

Using heat pump technology, new energy efficient dryers offer up to 40 percent in energy savings if operated on their most efficient settings and can save more than \$400 over the life of the dryer.

Practice Safety with these Reminders

No one knows electrical safety better than the experts who practice it every day. Lyon-Coffey Electric Cooperative encourages you to practice safety with these reminders—for during *and* after a summer storm.

Avoid wires and water

When lightning strikes a home during a storm, the electrical charge can surge through pipes and utility wires. That means you can get zapped if you're touching water or any device that's plugged in, whether it's a landline phone or toaster.

Skip the makeshift shelter

During a storm, it's tempting to take cover under a picnic gazebo or in a golf cart, but in open-sided structures with no conductors to channel lightning strikes, a bolt's path of least resistance to the ground could be you. In addition, these structures raise your risk of a lightning strike because of their height. Keep moving toward suitable shelter.

Portable generators

Take special care with portable generators, which can provide a good source of power, but if improperly installed or operated can become deadly. Do not connect generators directly to household wiring. Power from generators can back-feed along

power lines and electrocute anyone coming in contact with them, including co-op line workers making repairs. It's best to hire a qualified, licensed electrician to install your generator and ensure that it meets local electrical codes.

Flooded areas

Stay away from downed power lines and avoid walking through flooded areas. Power lines could be submerged and still be live with electricity. Report any downed lines you see to Lyon-Coffey Electric by calling immediately.

Electrical equipment

Never use electrical equipment that is wet—especially outdoor electrical equipment that could be a potential danger after a summer storm. Water can damage electrical equipment and parts, posing a shock or fire hazard.

Lyon-Coffey Electric is a proud member of Touchstone Energy Cooperatives. Along with 750 electric cooperatives nationwide, we have partnered with Touchstone Energy to put safety as our number one priority. For a checklist to assess safety hazards around your home or to take a quick safety quiz, go to www.togetherwesave.com/power-of-community/safety.



11th Annual

WildBlue BBQ & Expo

Join us July 17-18

at Kelley Park in Burlington

The 2015 WildBlue BBQ plans have begun! The event will be held on July 17-18 in Burlington at the Kelley Park.

This year, BBQ teams will be competing for cash prizes totaling \$10,000, including a \$3,000 grand prize.

Don't Miss the Fun!

For more information visit www.wildbluebbq.org or call 620-364-2116

Summer Storm Safety Tip

Strong summer storms can create dangerous situations. Always avoid downed power lines - the wire could be live, which could be deadly for those nearby. Quickly report downed power lines to Lyon-Coffey Electric.



Efficiency Tip of the Month

Circulate savings! Ceiling fans will keep you cool during summer months and can even allow you to raise your thermostat setting about four degrees without affecting your comfort.



Beat the Summer Heat with Cool Products

When temperatures soar in the summer, utility bills can do the same. There are several small ways to manage your energy use this summer. Lyon-Coffey Electric is happy to help you with those simple, no- or low-cost ways to save—but for those who are considering remodeling or making larger purchases, here are a few ideas that may help keep your energy use in check and keep your wallet cool.

Remodeling?

If you are making esthetic changes to your home, con-

sider products that will also make it work more efficiently. Heating and cooling systems use the most energy in our homes, so if you are making upgrades to your floors and cabinets, consider making some energy efficient upgrades, too.

If you're making additions to your home or converting attics or basements into living spaces, a ductless heating and cooling system is a great option. A ductless system does not require adding pipes or ductwork to a home's existing system, making it a more affordable upgrade for many. Ductless systems tend to be more effi-

cient, meaning homeowners will use less energy and save on their electric bills. Contact your local HVAC expert for more information.

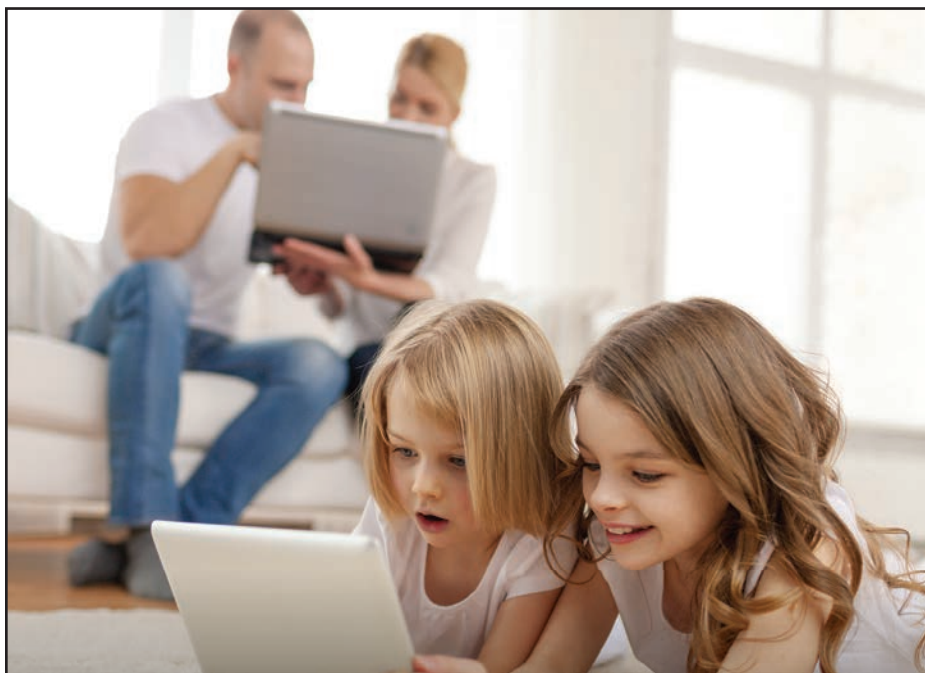
If making changes to your heating and cooling system isn't the right upgrade for you now, consider installing a smart thermostat. These "cool" devices learn your behavior and adjust heating and air conditioning settings with a goal to save energy. Smart thermostats also have the capability to connect to the Internet, allowing homeowners to manage energy use via a smart phone app.

Purchasing new appliances?

If you are considering purchasing new appliances that will use less energy, but may not have the budget for a complete appliance overhaul, start with replacing your clothes dryer. Dryers are big consumers of electricity, using around 900 kWh each year as compared to a refrigerator, which uses around 455 kWh each year.

There have been big developments with dryers in recent years, and Energy Star awarded two stand-outs—the LG EcoHybrid Heat Pump Dryer and the Whirlpool Hybrid-Care™ Heat Pump Dryer—the 2014 Emerging Technology Award.

Using heat pump technology, these dryers offer 40 percent in energy savings if operated on their most efficient settings and can save over \$400 over the life of the dryer.



YOUR FAMILY'S NEED FOR SPEED HAS JUST BEEN ANSWERED

MONTHLY DISCOUNTS

\$10 off each month for first 12 months

FREE INSTALLATION

with NO activation fee

Speed, dependability, and savings are all yours with Exede—now available from Lyon-Coffey Electric Cooperative.

It's the Internet service that delivers 140% of its advertised speed* so you can browse, shop, connect, stream and share online the way you want!



Lyon-Coffey
Electric Cooperative



CALL TOLL-FREE 800-400-8583 lyon-coffey.coop

Promotional price of \$10 off for 12 months applies to the 10 GB service package through the first 12 months of service. After that, it reverts back to the regular monthly price of \$54.99/month. If you choose a higher-level package, the price of that package will be discounted \$10/month through the first 12 months of service. Offer valid for service activation through 5/31/15. Service not available in all areas. Minimum 24-month commitment term. Actual speeds will vary. Use of Exede service is subject to data transmission limits measured on a monthly basis. For complete details and the Data Allowance Policy, visit www.lyon-coffey.coop. Exede is a service mark of ViaSat, Inc.

*FCC, 2013 Measuring Broadband America