


Electrical Safety Activity Booklet



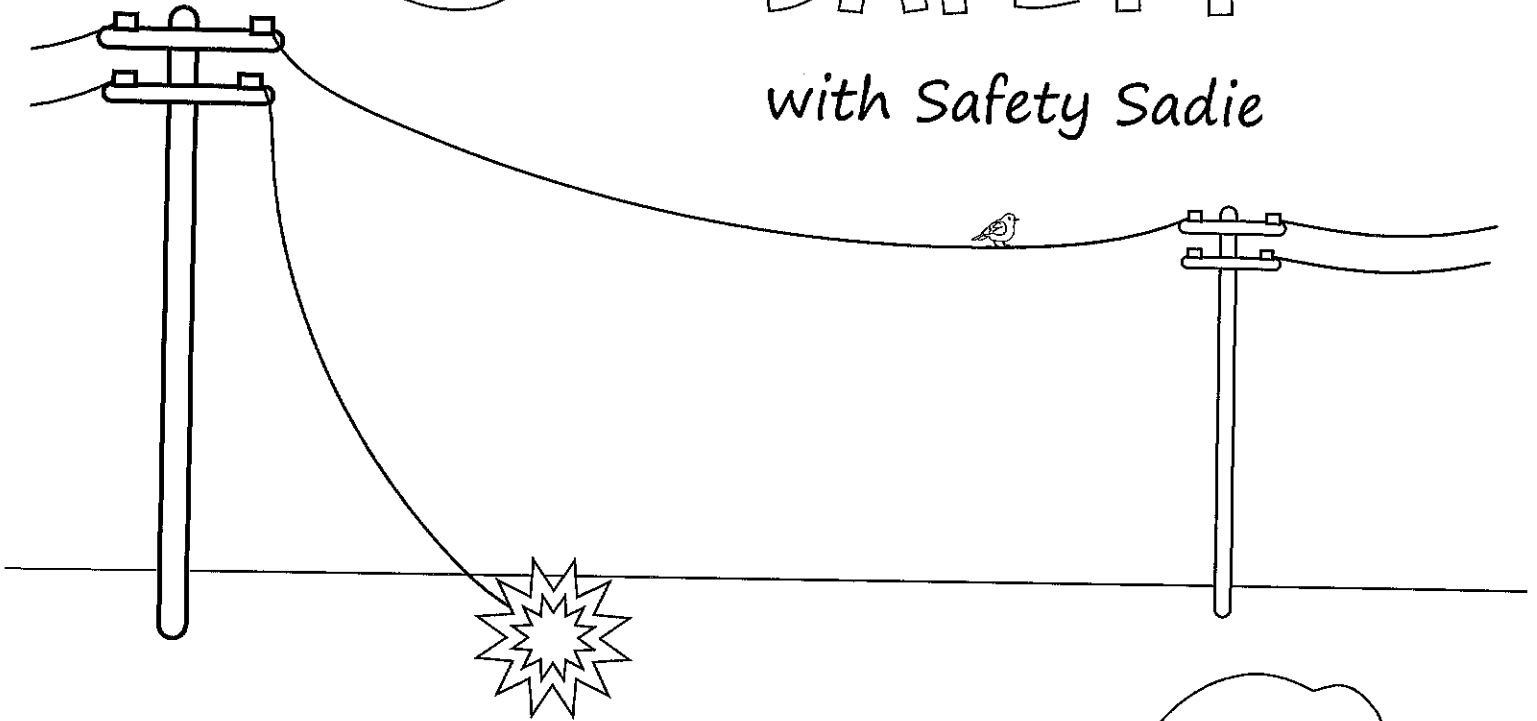
Electric Cooperative, Inc.

Your Touchstone Energy® Cooperative 

**Safe
Electricity.org**

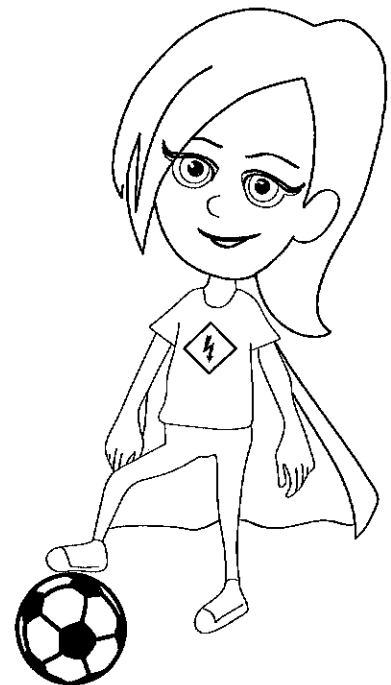
POWER LINE SAFETY

with Safety Sadie



NEVER go near downed power lines.

Stay far away and have an adult **call 911**.



Safe
Electricity.org

OUTDOOR

SAFETY

with *Safety Sadie*



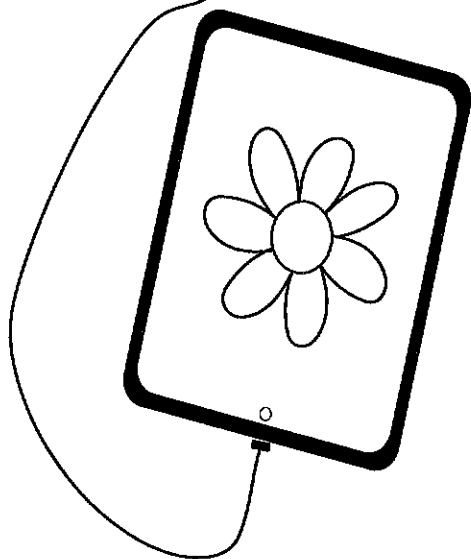
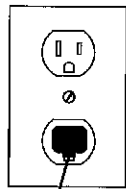
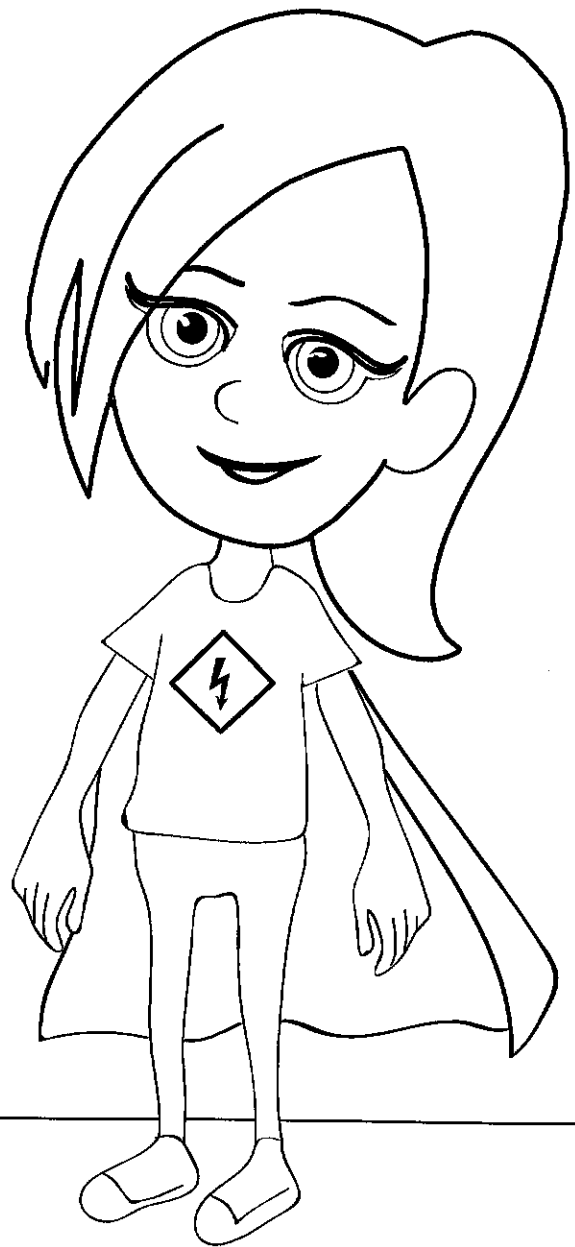
When playing outside, look up for power lines. **Never** climb a tree near a power line.

Learn more...

Safe
Electricity.org

OUTLET SAFETY

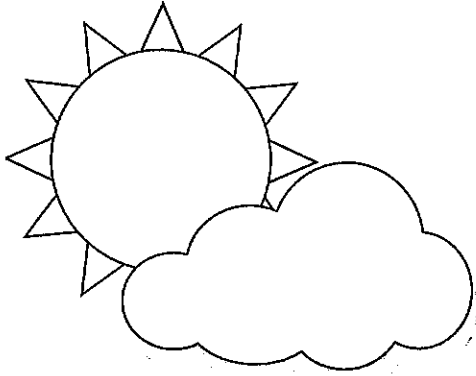
with Safety Sadie



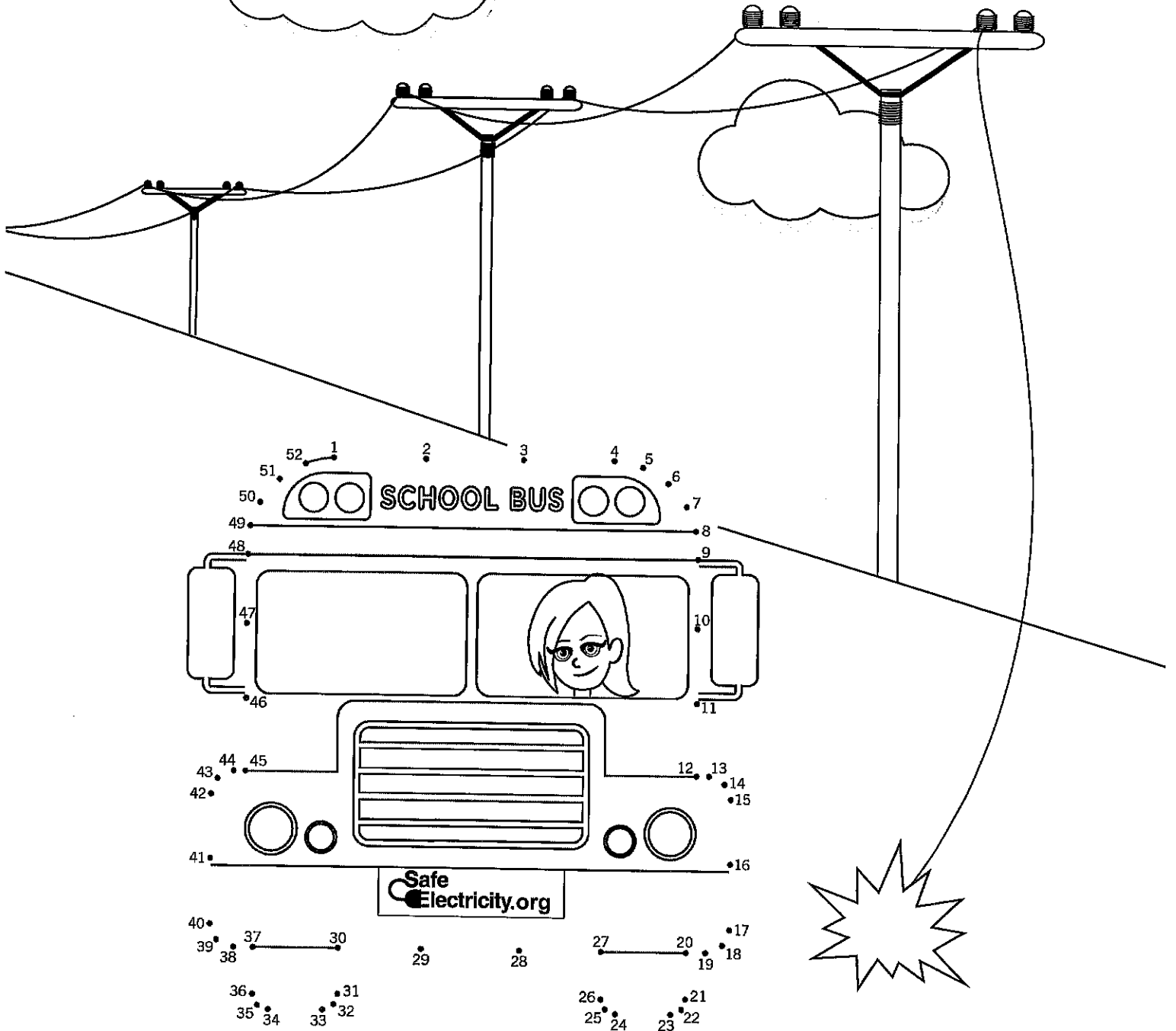
- **NEVER** use a charging device when you are in/near water
- **DON'T** charge devices on a soft surface (like a bed or couch)
- **ONLY** unplug devices by pulling on the plug, NOT the cord

Learn more...

 **Safe
Electricity.org**



WHEN LINES COME DOWN,
DON'T PLAY AROUND.
STAY ON THE BUS.





Junior Safety Agent, your help is needed to crack the code!

Safe Electricity has important safety tips to help keep people safe from electrical hazards while playing outside. Your mission is to discover what these safety tips are by completing the sentences below. Then, put the circled letters in the decoder. When you have finished all the sentences, the clues will come together to form a secret message!

1. Keep yourself and any play items away from power .
2. It is dangerous to climb trees near lines.
3. Never play around padmount .
4. should be flown far away from overhead power lines or other electrical equipment.
5. A kite string can electricity from a power line through a person to the ground.
6. It is safest to fly kites in large, open areas like a or a field.
7. Never climb a surrounding the substation for a ball or other toy. Call your utility for help.
8. Keep electronics like away from pools and hot tubs.
9. Be aware of the hazards, also known as , inside and outside your home.
10. Know where to fly model to avoid contact with power lines.
11. Damaged power lines are dangerous. Never touch a power line.
12. Making contact with electrical appliances while is dangerous.
13. Remember to think about before deciding where to play outside.
14. Always dispose of balloons properly.
15. Weatherproof covers should be used for exterior .
16. Never trees that are close to power lines.
17. Never swim in where boats are plugged in to shore power.
18. Don't plant tall near power lines.
19. Walk carefully, and don't run in areas near extension .

Congratulations! You've cracked the code, Junior Safety Agent! Be sure to share what you know about electrical safety to help keep your friends and family safe. Learn more at:



1. lines; 2. power; 3. transformers; 4. kites; 5. conduct; 6. park; 7. fence; 8. radios; 9. dangers; 10. planes; 11. downed; 12. wet; 13. safety; 14. Mylar; 15. outlets; 16. climb; 17. marinas; 18. trees; 19. cords

SAFETY Sudoku

Place the word **SAFETY** in the grid so each column, row, and block only contain unique letters!

⚡ SAFETY tip:

Fly kites and model airplanes **away** from overhead power lines and other electrical equipment. Only fly them during good weather conditions in a large open area like a park or field.



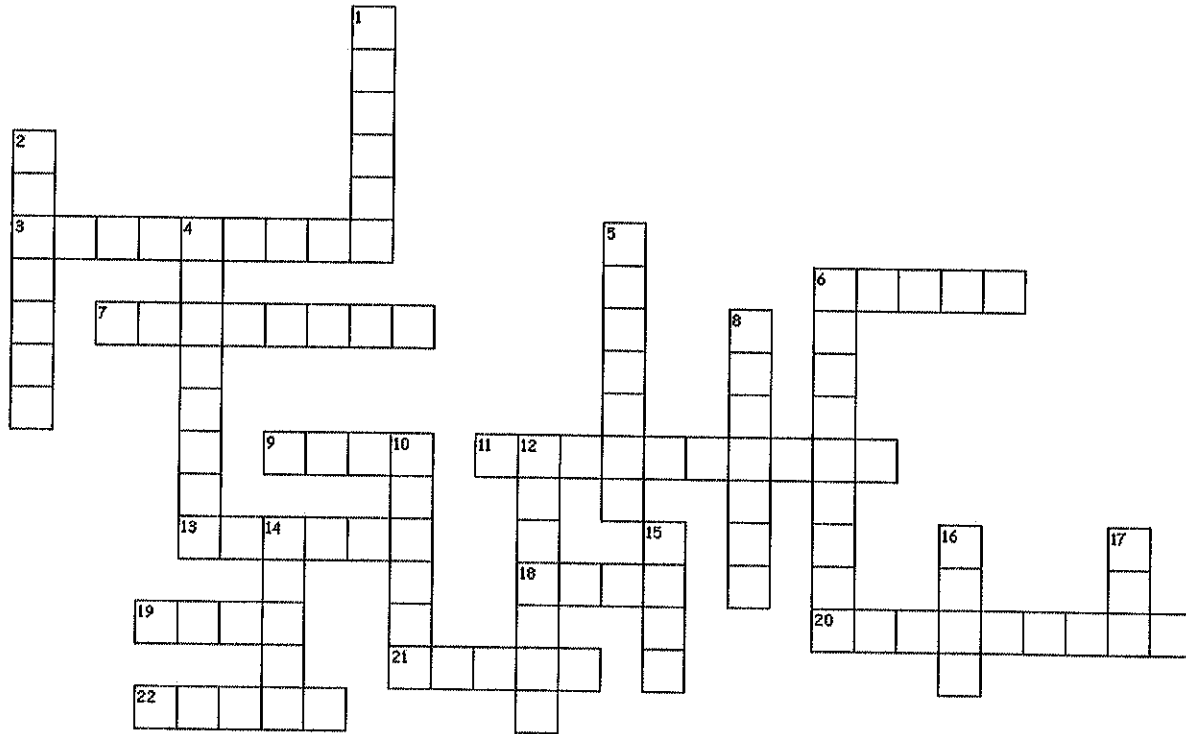
Y		E		T	A
	T		E	F	
F	E		T		S
T		S		E	F
	S	F		Y	
A	Y		F		E

Answers:

E	S	F	T	Y	A
T	Y	A	F	S	E
F	E	Y	S	A	T
S	A	T	Y	E	F
Y	F	A	E	S	T
A	T	S	E	F	Y

Be Safe with Electricity!

Read the Safety Tips to Find the Missing Words



Across

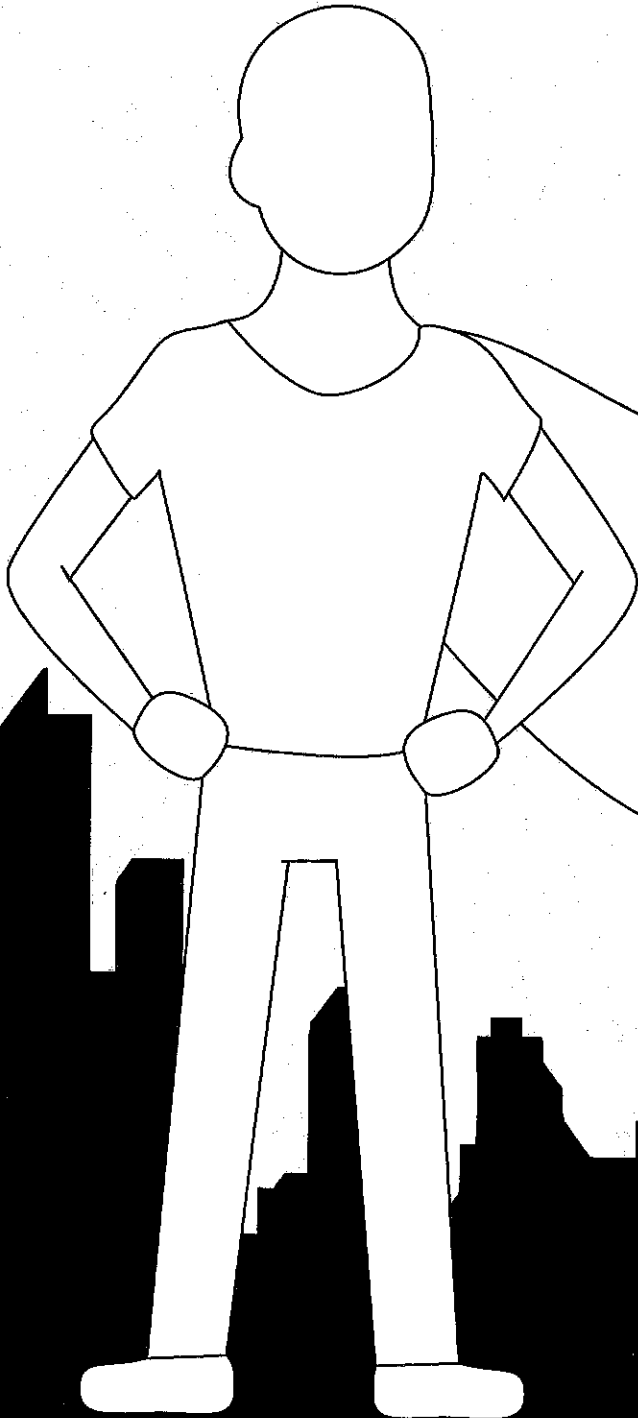
3. Use extension cords on a _____ basis - not as permanent household wiring.
6. Run lamp _____ along walls and behind furniture so they're safely out of the way.
7. Screw light bulbs in securely. Loose bulbs may _____ and cause a fire.
9. Before you dig, _____ your local underground utility locator service to avoid damage and injuries.
11. Prevent electrical shocks and fires by using safety-tested _____.
13. If you see a _____ or sagging power line, stay far away, warn others to stay away and call the utility company.
18. Make sure outlets in the kitchen, bathroom, laundry, workshop, basement and garage have _____s.
19. Unplug _____-producing appliances like irons and toasters when not in use.
20. Don't remove the _____ pin to make a three-prong fit a two prong outlet.
21. Make certain extension cords are _____ to handle the lamp, tool or appliance you are using.
22. Have your home's wiring checked regularly, at least every 10 _____.

Down

1. Use _____ covers or special outlets if you have young children in the home.
2. All _____ sockets should have ground fault circuit interrupters (GFCIs). Use a portable GFCI if those outlets don't have them.
4. Flickering, blinking and dimming lights can be a sign of home electrical _____.
5. Test ground-fault circuit interrupters (GFCIs) _____.
6. Keep cords out of walkways. Don't cover cords with _____ or rugs. The cords could overheat.
8. Go indoors when _____ roars.
10. Never place tall items like a _____ or antenna near a power line.
12. Never reach into water for a _____-in appliance. Unplug it first.
14. Keep appliances away from _____.
15. Overloaded outlets and extension cords can overheat, increasing the risk for _____. Limit the number of appliances plugged into each outlet.
16. Pull by the _____, not the cord when unplugging appliances.
17. Keep all objects at least _____ feet away from overhead lines.

Across: 3. temporary 6. cords 7. overheat 9. call 11. appliances
 13. downed 18. GFCI 19. heat 20. grounding 21. rated 22. years
 Down: 1. safety 2. outdoor 4. overhead 5. monthly 6. carpeting
 8. thunder 10. ladder 12. plugged 14. water 15. fire 16. plug 17. ten

**CREATE YOUR
OWN**



**5 WAYS I AM A
SAFETY SUPERHERO**

1. _____
2. _____
3. _____
4. _____
5. _____