




Your Touchstone Energy® Cooperative 
 P.O. Box 70 McLouth, KS 66054-0070
 888-796-6111
 www.ljec.coop

**LEAVENWORTH-JEFFERSON
 ELECTRIC COOPERATIVE**

The Powerline

**Leavenworth-Jefferson
 Electric Cooperative, Inc.**

Board of Trustees

Jeanine Murphy
 President

Mark Gratny
 Vice President

Marty Shaw
 Secretary

Harlan Hunt
 Treasurer

Ken Bailey
 Trustee

Larry Meadows
 Trustee

Ralph Phillips
 Trustee

Bill Pohl
 Trustee

Larry Stevens
 Trustee

Staff

Steve Foss
 General Manager

Chris Parr
 Assistant Manager

**Energy Efficiency
 Tip of the Month**

Save energy and money by lowering your water heater thermostat to 120 degrees. This will also slow mineral buildup and corrosion in your water heater and pipes.

FROM THE MANAGER

Looking Forward

At Leavenworth-Jefferson Electric, we're looking forward to 2016 because it is shaping up to be one of our biggest years yet.

One of the highlights of the year will be our annual meeting on April 19. This year, the annual meeting will also include the vote on the consolidation with Kaw Valley Electric Cooperative. The consolidation is something that both cooperatives have been hard at work on since October 2014. The work continues behind the scenes, and will continue as we move forward.

We're working on updates to our regulations so we can better serve our members. We want each and every one of you to benefit from programs and offerings that will help you save money and be as efficient as you can be.

As you all work to be more energy efficient to save on your electric bill, here at LJEC we are working to be more efficient to keep the cost of business down. We'll improve our billing processes, identifying and implementing best practices, and we'll implement easier ways for you to pay your bill over the phone. We are looking at new technology available and how we can utilize it to make your overall experience better and more secure.

The introduction of new member

service practices doesn't mean your first-class service will go away. We are still fully committed to giving each one of you the quality service you deserve. You will still be able to call on us to answer questions, and we'll be available for you when you visit the office.



Steve Foss

I've been asked about how the consolidation will change the cooperative. To be really honest, the biggest changes won't be noticeable to our members. Those changes will be on the business side of the cooperative. However, you may notice a new name and logo, and more resources and programs available.

Next month we'll provide more information on the consolidation, including the introduction of the new name and logo. We'll also introduce you to the board of trustee candidates up for election.

We look forward to April 19, and we hope you are too!

As always if you have questions about your service or the cooperative, we encourage you to contact us at 888-796-6111 or email us at info@ljec.coop.

2016 Youth Tour Contest Application

Electric Cooperative Youth Tour – June 9-16, 2016

Cooperative Youth Leadership Camp – July 16-22, 2016

If you are a high school junior, and your parents or guardians are LJEC members residing in the coverage territory, you are eligible to apply.

LJEC will send one student to the Electric Cooperative Youth Tour in Washington, D.C., June 9-16, 2016, and two students to the Cooperative Youth Leadership Camp in Steamboat Springs, CO, July 16-22, 2016.

Complete the application below by **February 15, 2016**. When you mail in the application below you will be sent an official packet.



Emma DeMaranville poses in front of the Washington Monument during the 2015 Electric Cooperative Youth Tour. This year's tour is June 16-22, 2016.

Applicants will complete a quiz and personal interview at the LJEC offices on Sunday, February 28, 2016.

For more information contact Sarah Farlee at sarah.farlee@ljec.coop, or call 913-796-6111.



Maddy Broxterman (left) and Carissa McAfee (right) enjoy the view of the Elk River during the 2015 Cooperative Youth Leadership Camp. This year's camp is July 16-22, 2016.

Scan these Codes to Get More Information

Washington, D.C.



Steamboat Springs, CO



Student Name: _____ Date of Birth: _____

Mailing Address: _____

Phone Number: _____

High School: _____

Email Address: _____

**Please provide an address that is checked often, as materials and requests will be emailed to the provided address.*

I hereby grant permission for the above named applicant to enter the 2016 Youth Tour competition sponsored by Leavenworth-Jefferson Electric Cooperative.

Signature of parent/guardian (must be an LJEC member residing in the coverage territory)

Return application request to:
LJEC
Attn: Sarah Farlee
507 N. Union, McLouth, KS 66504

This form is a request for an official application packet. You will be notified of application process details upon receipt of this request form.

Looking For Advantages: A Trustee's Perspective

BY LARRY MEADOWS, DISTRICT 4 TRUSTEE



Larry Meadows

Valley Electric cooperatives have done with the proposed consolidation.

Out of every dollar you send to LJEC, 65 cents pays for the power we purchase in order to distribute electricity to our members, and 10 cents of that dollar pay taxes and interest. That leaves 25 cents to run the cooperative. That quarter is the only portion of that dollar we can control, and the only quarter we can examine for savings.

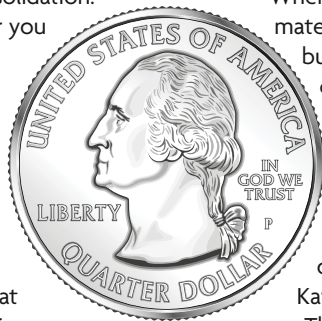
The proposed consolidation of LJEC and Kaw Valley Electric will save money. It is currently forecasted that by joining resources, we will save \$18 million over the next 10 years.

These savings come from measures both cooperatives have taken with that quarter of your dollar.

Some of the ways we've been

It is the fiduciary duty of the Board of Trustees to look at all the possible ways the cooperative can save money, and that is exactly what the boards of LJEC and Kaw

saving have been to increase the efficiency of our day-to-day operations. We've reduced redundancy through staff attrition. We have had several good folks retire in the last few years at both cooperatives, and we've been able to utilize staff in different ways to fill these roles. We have offered employees opportunities to advance, and we have attracted top-notch talent in roles we needed to fill.



When it comes to the materials cost, we utilized buying power by purchasing in larger quantities, and we have shared or avoided costs by sharing equipment and new technology through our partnership with Kaw Valley Electric.

The bottom line is that consolidation means savings from that quarter of your dollar. A quarter doesn't sound like much, but you have to remember that the sum of all small things can add up to big things.

I'm proud to support the proposed consolidation with a "yes" vote on April 19, because I'm in favor of big savings (and opportunities) to come.

LARRY MEADOWS lives in Tonganoxie and has represented District No. 4 since 2006.

90 Years of Experience will Retire this Month

Over 90 years of experience will leave LJEC. On December 22, LJEC recognized and celebrated the accomplishments and careers of **KATHLEEN NORRIS**, Executive Secretary/Benefits Administrator; **JERRY TERRY**, Purchasing; and **JONNA SHOEMAKER**, Cashier. They will all be missed!



Kathleen Norris (left), Jerry Terry (center), and Jonna Shoemaker (right) retired with a combined 90 years of experience.

Notice on Security Light Upgrades

LJEC will be changing LED rental space lights (security lights) in residential locations when their mercury vapor or metal halide rental space lights go out.

The security light rental price will not change at this time.

The lights will look slightly different (no globe), but will be more efficient for our members. If you have questions about your security light, or these upgrades please call the office at 1-888-796-6111.

2015 Service Awards

LJEC employees celebrated 2015 with service awards and fellowship on Thursday, December 17. The following received awards:

40 years

▶ **JERRY TERRY**, Purchasing

30 years

▶ **KATHLEEN NORRIS**, Executive Assistant

25 years

▶ **MIKE JONES**, Area Lineman

20 years

▶ **TOM MITCHELL**, Line Superintendent

▶ **JONNA SHOEMAKER**, Receptionist/Cashier

15 years

▶ **TRACI DEPRIEST**, Member Account Supervisor

▶ **GREG KRAMER**, Journeyman Lineman

▶ **JOHN MALONE**, Journeyman Lineman

▶ **RANDY WAGER**, Foreman Tree Crew

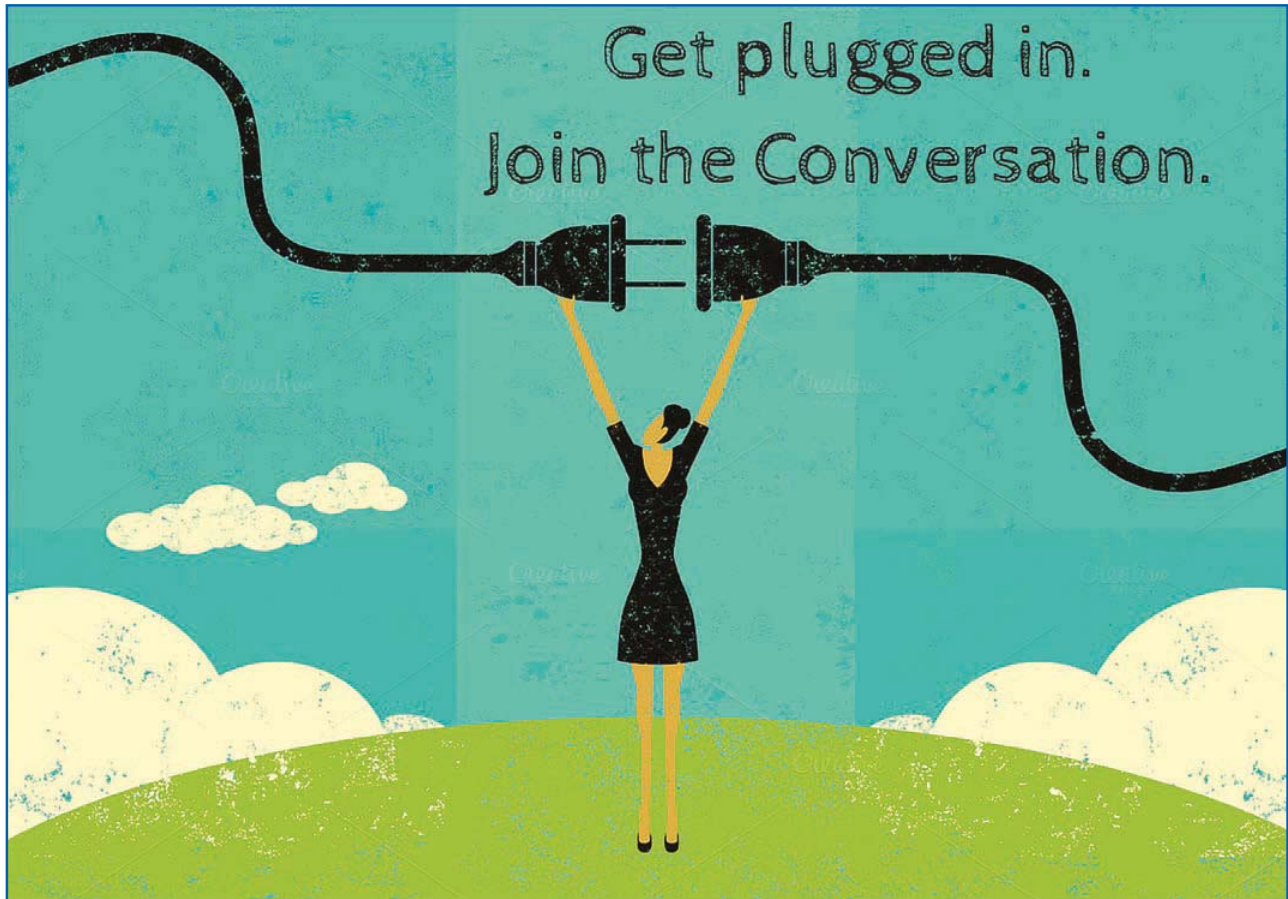
▶ **JEFF WERNER**, Tree Trimmer

▶ **HARLAN HUNT**, Attorney

10 years

▶ **JEREMY CAMERON**, Journeyman Lineman

▶ **JOHN WINE JR.**, Attorney



Join the conversation about the upcoming consolidation vote. Join leadership from Kaw Valley and Leavenworth-Jefferson Electric Cooperatives to discuss the future of your electric cooperative and learn how plugging in to the future can stabilize your rates, and improve your service.

March 2, 2016
11 a.m. to 1 p.m.
Kaw Valley Electric Office

March 8, 2016
2 p.m. to 3:30 p.m.
Sommerset Hall Cafe, Dover

March 3, 2016
11 a.m. to 1 p.m.
LJEC Office

March 24, 2016
11 a.m. to 1 p.m.
Auburn Community Center

www.voteyesApril19.com